

PORTFOLIO
Architekt

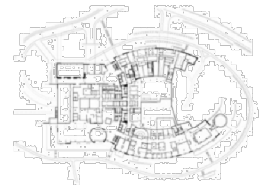
Frank Matthias Weigelt

Auswahl 1995 - 2023

7. Jan 2024




INTERCONTINENTAL
Interconti Resorthotel *****
Berchtesgaden
www.berchtesgaden.intercontinental.com



Client : Gewerbegrund GmbH München
Volume : 97.350 m³
Rooms : 136
Contract Price : € 75,3 Mio.
Completion : 2005

In a horseshoe shape, the InterContinental Berchtesgaden resort nestles to the crest of the Eckerbichl. Both rooms wings are completely glazed on all four floors and bring the magnificent scenery in all areas of the mountain resorts. The hotel is surrounded by an original grazing meadows and Stubaiatal mountain panoramas. This reflects in nature also in interior design: natural stones, precious woods and a color range of warm earth tones and the red orange shades of sunset quote nature. Colorful glass, refined lighting and clear lines put skillfully contrasts - overall a contemporary and timeless design language that sets apart from other top Hotels luxury resort.

The Munich Office of Kochta architect is responsible for the stunning architecture. The interior design concept was developed by Mahmoudieh design, Berlin.

Cooperation Kochta Architekten




DOUBLETREE
 BY HILTON™

HILTON Doubletree ****
Russia Perm
www.doubletree3.hilton.com

Client : BC - Development
Volume : 96.060 m³
Rooms : 218
Contract Price : € 46,2 Mio.
Completion : 2015

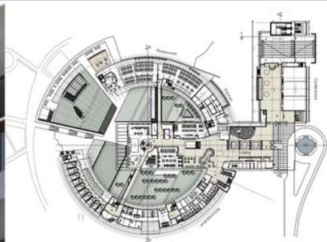
In a mirror angle, the Doubletree Hotel Perm will be right situated in the center of Perm along with a beautiful view to the city passing Kama riverside.

It is basically planned as businesshotel with a big conference area as well as there are some more public parts as a gourmet restaurant with an own access and an extra SPA with treatments and a Poolzone with it. Or you can find a Skybar on the top of the 70meter highraising building.

The Munich Office of Kochta architects are basically tuned up for designing a Cityhotel what is giving Perm a further landmark.

Cooperation Kochta Architekten





Newspring Resorhotel *****
 Russia Suksun
 www.rezidor.com

Client : Uralia Investment Agency
 Rezidor Hotel Group

Volume : 296.050 m³
 Rooms : 408
 Contract Price : € 67,8 Mio.
 Completion : 2008 (not realized)

A resort-hotel with approx. 400 rooms, a spacious spa-area, a conference- and event-centre, a few rentable bungalows, a big sports area, including a multipurpose hall, a water park, a ski lift and ample parking space for cars will be realized on the hilltop of a property near Suksun.
 The development would be carried out via an existing road from Suksun as well as a helicopter landing site. The distance to Perm is approx. 130 kilometers.

The hotel will meet western European standards and should be attributed to the 4-star-category.

Cooperation Kochta Architekten



Kochta Architekten

"Urwaldhaus"
 Hellabrunn München



Kochta Architekten

3. Bauabschnitt
 Barmherzige Brüder München



Henn Architekten

Bioinnovationscenter
 TU Dresden

Residentials in the Center

Client : Gewerbegründ Bauträger GmbH & Co.
 Volume : 13.700 m³
 Contract Price : € 4,2 Mio.
 Completion : 1998

As part of the comprehensive project "Seidl24" with officebuilding and daycare center in a gap between buildings it become a seven store high raising apartmentbuilding with stores on its groundlevel, opening a passage and so building the access to the officecomplex in the inner courtyard.
 Material of the facade was the adapted blaster-facades of the surrounding.

In the neighbored listed residential building the stores were rebuilt and furnished with showcases.

Cooperation Kochta Architekten



Fotos: Späts advertisement, München



Städtebau



Heart of Perm Russia - Citycenter Perm

Client : Uralia Investment Agency

Volume : 296.050 m³
Contract Price : € 85,0 Mio.
Completion : 2008 (not realized)



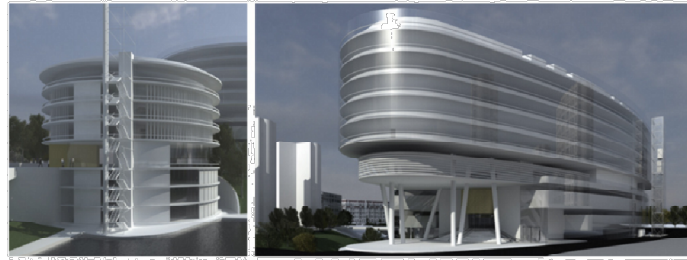
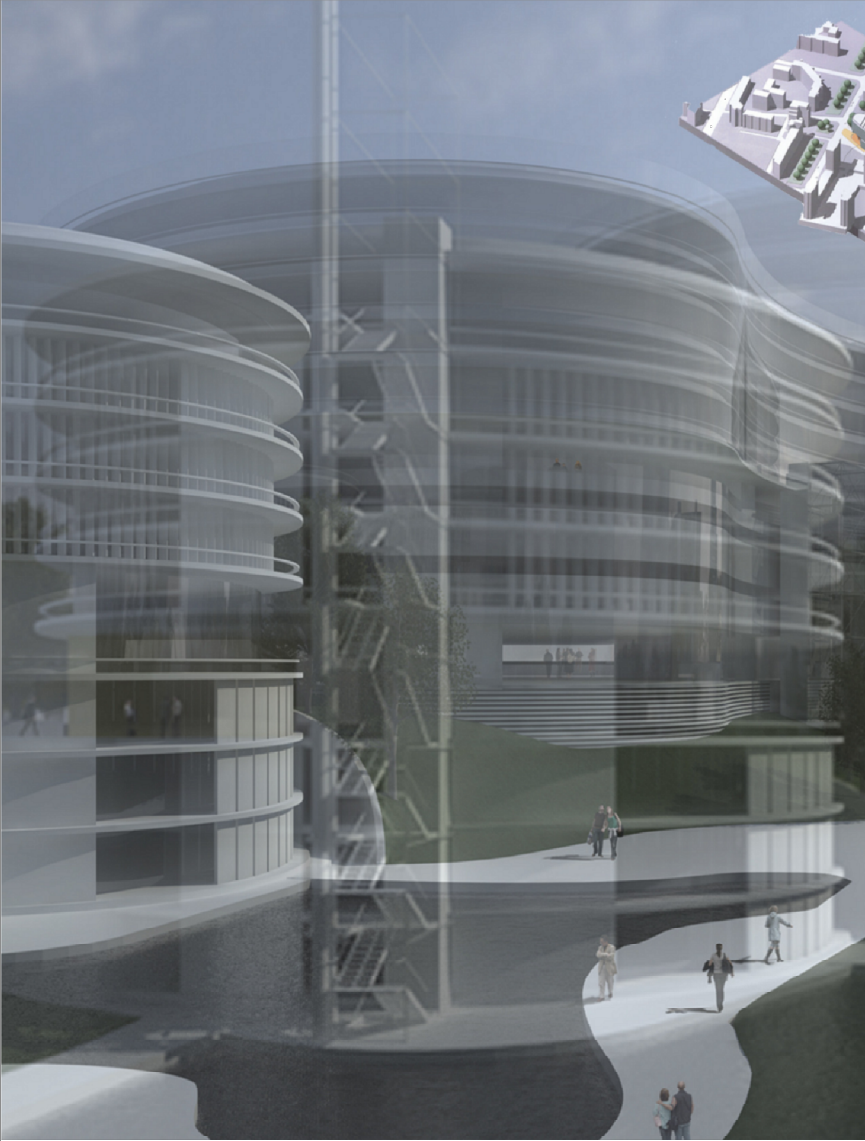
During urban designprocess we choose a heart shaped complex what gave us many advantages to integrate such a high building in the cityscenery of Perm and at the same time it is giving citizen an icon for what it should be even the new heart of the city.

There is organised a lot of different functions as: a shoppingcenter, parking, a hotel with 255 rooms, a swimminghall with addicted SPAareas, a conferencecenter with a cityhall for more than 1.600 people as well as offices and flats.

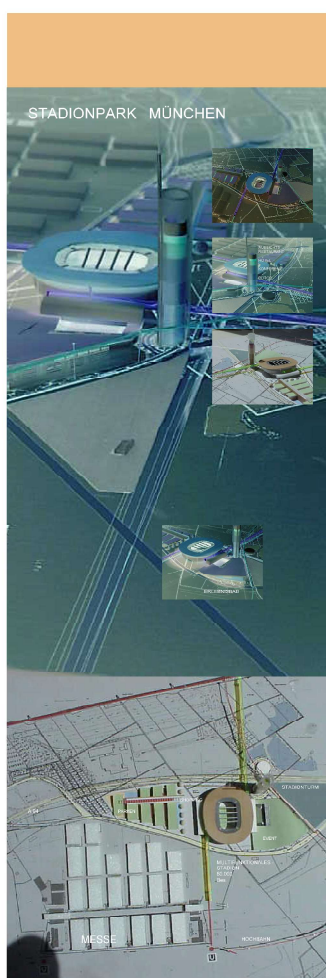
There was developed in between one connecting yardlevel with little coffees and shops which connects upper floors and streetlevel actions.

An independant Courtyardbuilding is organised in relation next to the complex.

Cooperation Kochta Architekten



MSt Bahnhofsareal Pasing



MSt Stadion Riem



CAMPUS

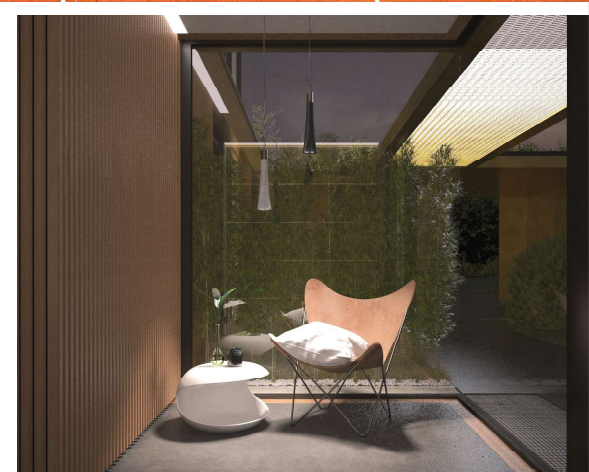
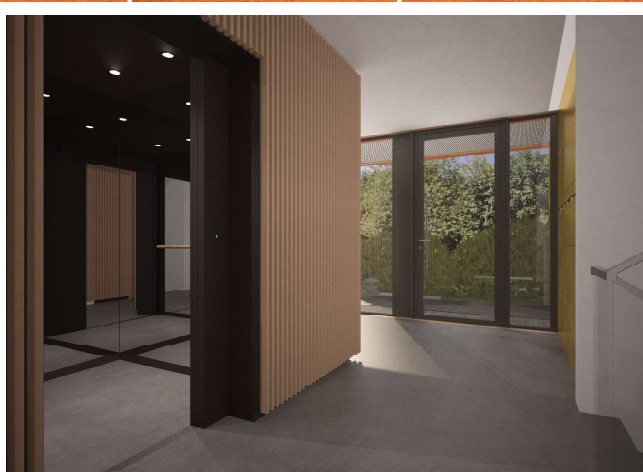
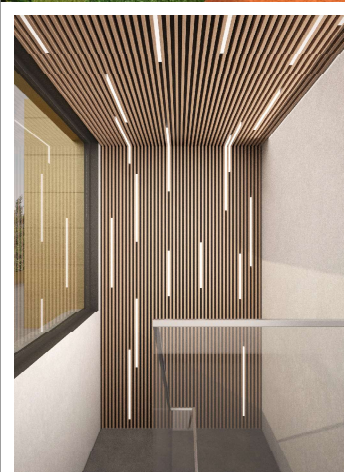


SPINE

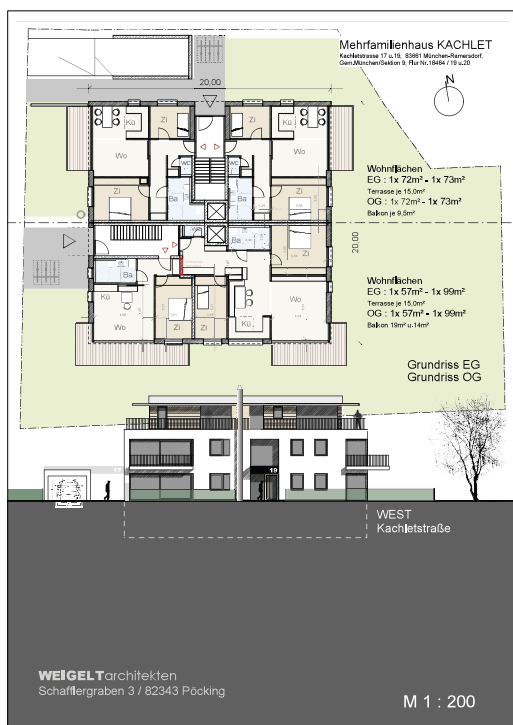


YARD

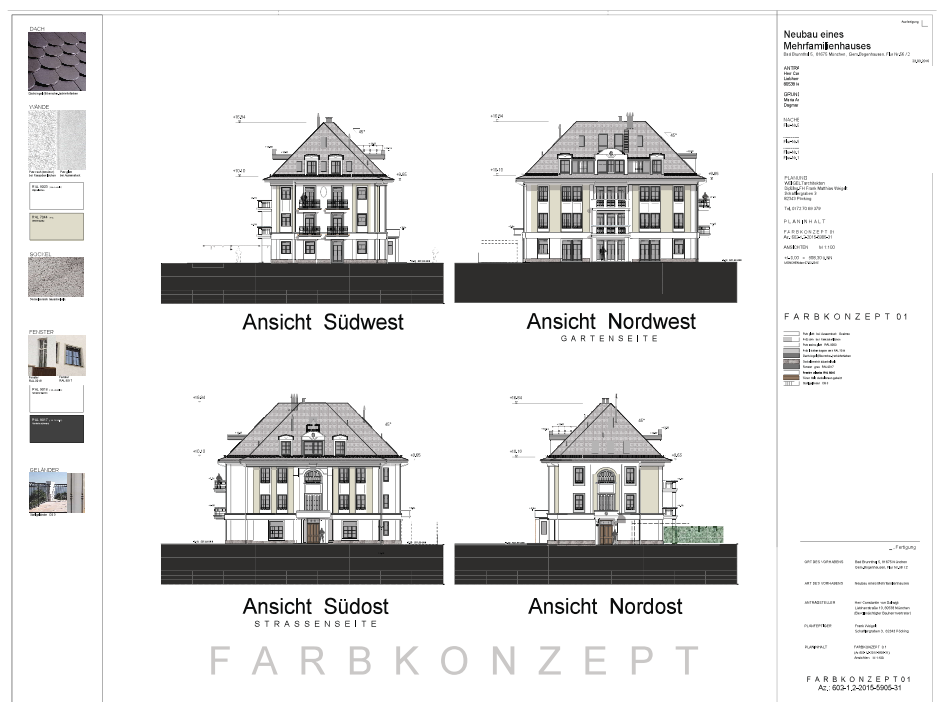
MSt Bahnhofsareal Haar



FLE München-Herzogpark



RAM München



BB München-Bad Brunenthal

